

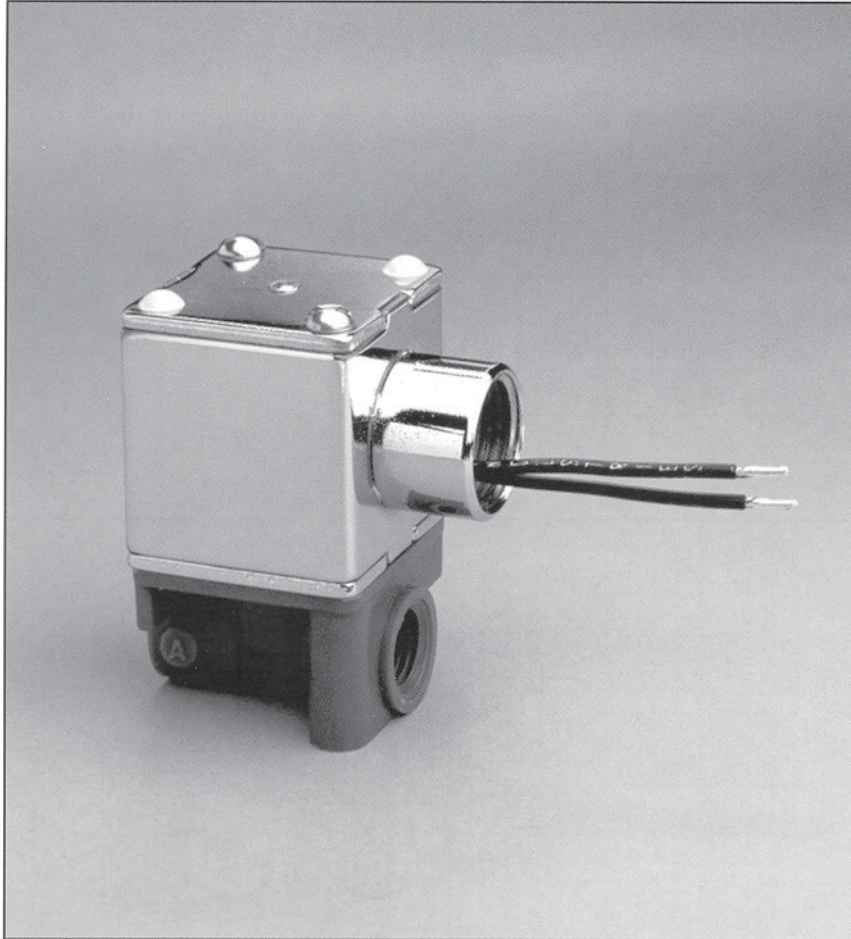
# 1

Valcor Scientific

# Multi-Purpose Solenoid Valve

2-Way, Normally Closed

Model: SV61



## APPLICATIONS

Model SV61 is suitable for a broad range of light industrial applications, both new and retrofit. Typical applications employing the Model SV61 include:

- Flavor dispensing, syrup and water control in food/beverage industry.
- Dialysis equipment, angioplasty instrumentation.
- Point-of-Purchase Displays for packaging industry.
- Wafer polishers for semiconductors.

## FEATURES

- Direct acting design with bubble-tight shut-off.
- No minimum pressure required for operation.
- Rugged construction with stainless steel trim.
- Polypropylene body constructed of FDA listed material.

## INTRODUCTION

Valcor Scientific, a Division of Valcor Engineering, has designed and engineered rugged, reliable solenoid operated valves for more than 50 years.

The SV61 Model was specifically engineered for long and reliable general industrial service with non-corrosive liquids, gases and vapors.

## DESCRIPTION

The SV61 Series are direct acting, two-way, normally closed poppet solenoid valves. When de-ener-

gized, the plunger is held down on the valve seat by means of a spring load. When energized, the plunger is lifted from the seat, allowing the media to flow through the valve.

Ruggedly built for long life and reliable service, the SV61 Series requires no minimum pressure for operation.

The SV61 Series is available in three orifice sizes.

## SPECIFICATIONS

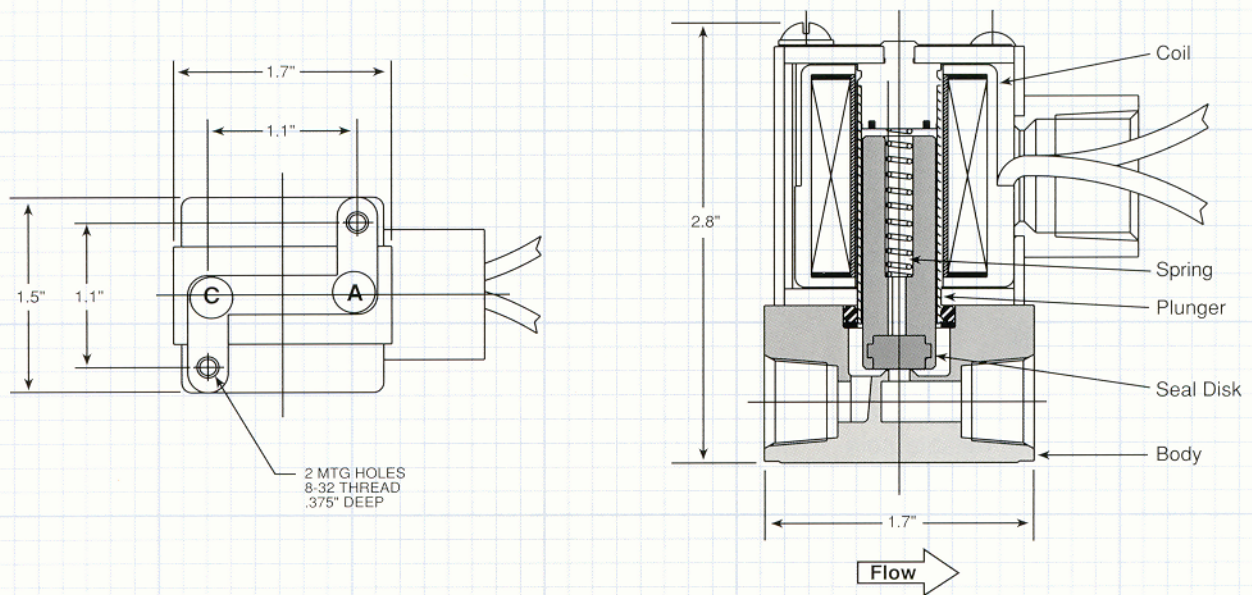
Size: ..... 2.8" H x 1.7" W x 1.5" D  
 Weight: ..... 9.3 oz. (265 g)  
 Port Connection: ..... 1/4" NPT  
 Materials in Contact with Fluid: ... Polypropylene, Stainless Steel,  
 Silver (AC valves only), Buna-N  
 Coil Construction: ..... UL Class B w/18" Leads  
 Power: ..... 10 Watts (24 VDC or 115/60Hz)  
 Special Requirements: ..... Consult Factory

Teflon® is a registered trademark of the DuPont company

## PERFORMANCE SPECIFICATIONS

Model Number	Orifice Size	C <sub>v</sub>	PSIG		Coil	Watts	Minimum Operating Pressure (PSIG)
			Gas	Liquid			
SV61C19P1	1/16"	0.10	250	250	115v/60Hz	10	0
SV61C56P1	1/16"	0.10	250	250	24VDC	10	0
SV61C19P3	1/8"	0.30	200	190	115v/60Hz	10	0
SV61C56P3	1/8"	0.30	185	175	24VDC	10	0
SV61C19P6	1/4"	0.70	65	60	115v/60Hz	10	0
SV61C56P6	1/4"	0.70	55	35	24VDC	10	0

## OUTLINE DIMENSIONS MODEL SV61



1

Valcor Scientific

Valcor Engineering Corporation®

2 Lawrence Road • Springfield, New Jersey 07081

973-467-8400 • Fax: 973-467-9592

scientific@valcor.com • www.valcor.com